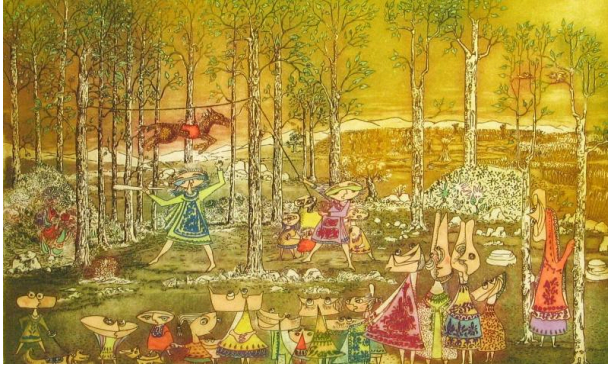


Basic Detail Report



Piúata

Primary Maker

Guillermo Silva Santamaria

Medium

Etching on paper

Dimensions

43.2 x 50 cm

Description

This is a colour intaglio print (etching) with hand painted additions on paper, depicting a party in a wooded area. In the middle ground there are figures trying to hit a piñata. In the foreground human-like figures look on. The copperplate has been inked up using the *á la poupée* method, whereby different coloured inks are used simultaneously on the same plate. Hand colouring is also used in this print, where the artist directly paints onto the surface of the print. Not visible in the image shown here are two little characters printed below the main print, each are printed from a separate piece of copper cut to their shape, the same creatures can be seen again below the print entitled *Una Dama Admirable*. Guillermo Silva Santamaria was born in Bogota, Colombia in 1921. At the age of 16, he studied painting under French Impressionist Pierre Dagué. In the years to follow, he traveled in the United States and France and continued his studies. He established a workshop for stained glass in Colombia in 1949, and taught drawing the following year in Bogota. While living in Mexico City, during the 1960s, as a Master Engraver, he taught engraving at UNAM and the Ibero-American University. While there he developed the technique of Intaglio and "Mixed Technique" etching with watercolor.