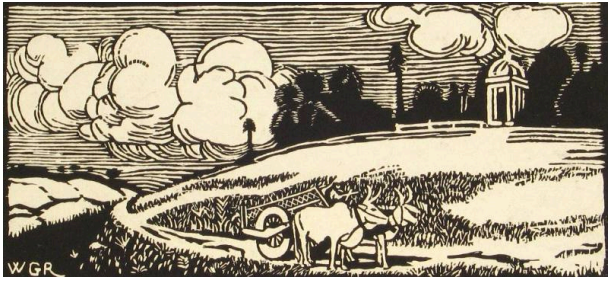


Basic Detail Report



The Temple House

Date

1923

Primary Maker

Walter G Raffé

Medium

Woodcut on paper

Dimensions

10.8 x 22.8 cm

Description

This is a relief print (woodcut) on paper, depicting a landscape with an oxen drawn cart in the foreground and building in the background. British writer, lecturer, and designer, who took a special interest in the occult in relation to art and colour. He was educated at Halifax Technical College, Leeds College of Art, and the Royal College of Art, South Kensington, England. He was art director of the Northern Polytechnic, London (1919-21); principal, Lucknow School of Art, India (1921-23); and lecturer to the London County Council (1925), before a lengthy career as an independent writer and designer. He contributed to many periodicals dealing with arts, crafts, colour, psychology of art, and occultism.